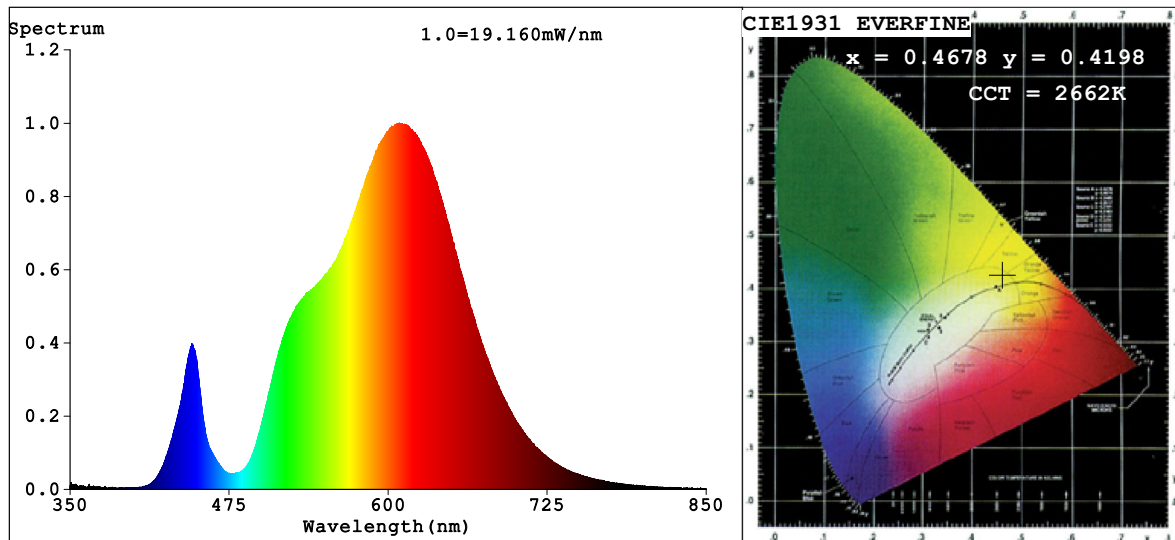


Spectrum Test Report



Color Parameters:

Chromaticity Coordinate: $x=0.4678$ $y=0.4198$ $u'=0.2635$ $v'=0.5320$
 CCT=2662K(Duv=0.0027) Dominant WL:Ld =583.6nm Purity=66.4%
 Ratio:R=25.2% G=73.8% B=1.1%; Peak WL:Lp=608.8nm FWHM=136.3nm
 Render Index:Ra=80.7 CRI=74.2 TM30:Rf=78 Rg=99
 R1 =80 R2 =86 R3 =91 R4 =82 R5 =78 R6 =81 R7 =85
 R8 =62 R9 =12 R10=66 R11=82 R12=59 R13=80 R14=94 R15=73

Photo Parameters:

Flux = 895.0 lm Eff. : 76.30 lm/W Fe = 2.768 W

Electrical parameters:

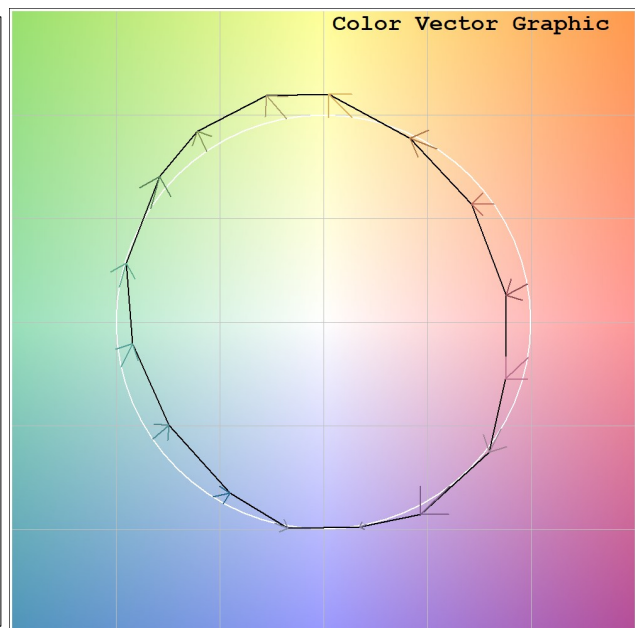
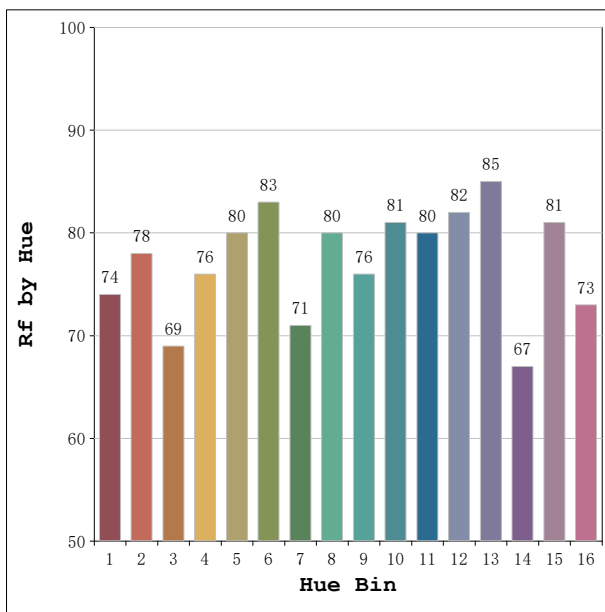
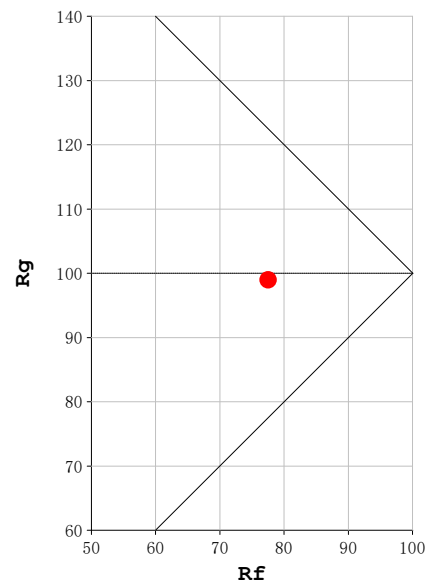
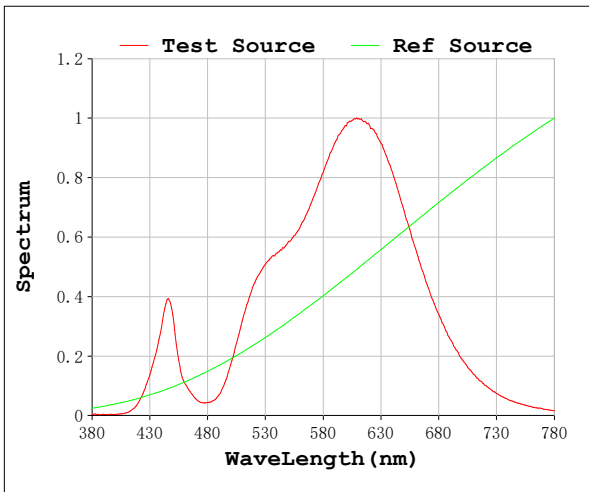
V = 230.09 V I = 0.05618 A P = 11.73 W PF = 0.9075

Status: Integral T = 1250 ms Ip = 43853 (67%)

Model:Ecoled Infinity Cob
 Tester:Sergio Carneros
 Temperature:20Deg
 Manufacturer:Luz Negra

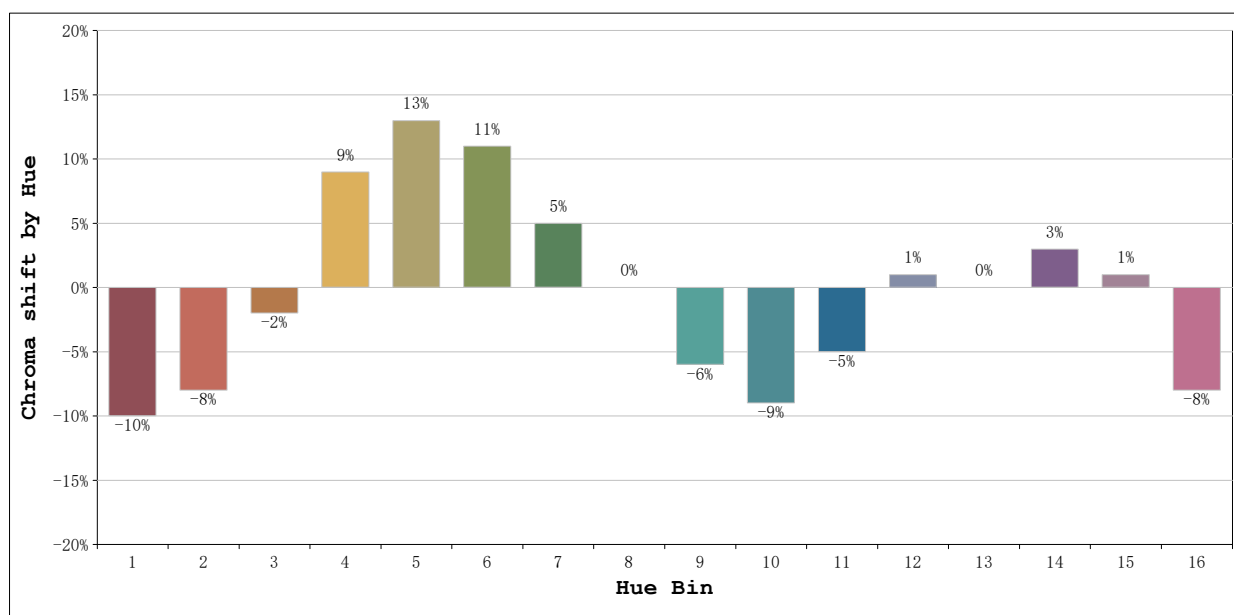
Number: 34.265 Roll to Roll
 Date:2026-03-25 10:04:34
 Humidity:50%
 Remarks:100cm de tira flexible

Rf: 78 **CCT: 2662 K** **u': 0.2635**
Rg: 99 **Duv: 0.0027** **v': 0.5320**



Model:Ecoled Infinity Cob
Tester:Sergio Carneros
Temperature:20Deg
Manufacturer:Luz Negra

Number: 34.265 Roll to Roll
Date:2026-03-25 10:04:34
Humidity:50%
Remarks:100cm de tira flexible



			Graphic shift(%)	
Hue Bin	Hue Angle	Rf	Chroma	Hue
1	0.0° - 22.5°	74	-10	-3
2	22.5° - 45.0°	78	-8	6
3	45.0° - 67.5°	69	-2	14
4	67.5° - 90.0°	76	9	13
5	90.0° - 112.5°	80	13	7
6	112.5° - 135.0°	83	11	-1
7	135.0° - 157.5°	71	5	-14
8	157.5° - 180.0°	80	0	-11
9	180.0° - 202.5°	76	-6	-9
10	202.5° - 225.0°	81	-9	0
11	225.0° - 247.5°	80	-5	6
12	247.5° - 270.0°	82	1	7
13	270.0° - 292.5°	85	0	-2
14	292.5° - 315.0°	67	3	-18
15	315.0° - 337.5°	81	1	-11
16	337.5° - 360.0°	73	-8	-11

Model:Ecoled Infinity Cob
Tester:Sergio Carneros
Temperature:20Deg
Manufacturer:Luz Negra

Number: 34.265 Roll to Roll
Date:2026-03-25 10:04:34
Humidity:50%
Remarks:100cm de tira flexible